

RAINIER

Construction	Tufted, Random Tip Shear
Yarn Content	100% Undyed Wool
Tufted Yarn Weight	44 Ounces
Maximum Pile Height	12/32
Primary Backing	Hemp/Cotton
Secondary Backing	Jute
Adhesive	Natural Rubber
Stain Treatment	None
Width	12'
Flammability	Meets or Exceeds Rugs Methenamine Pill Test Requirements for Carpets and Area



Rainier Snowfield



Rainier Tussock



Rainier Granite



Rainier Ursus

MCKINLEY

Construction	Tufted, Textured Loop Pile
Yarn Content	100% Undyed Wool
Tufted Yarn Weight	44 Ounces
Maximum Pile Height	12/32
Primary Backing	Hemp/Cotton
Secondary Backing	Jute
Adhesive	Natural Rubber
Stain Treatment	None
Width	12'
Flammability	Meets or Exceeds Rugs Methenamine Pill Test Requirements for Carpets and Area



McKinley Snowfield



McKinley Tussock



McKinley Granite



McKinley Ursus

DOLOMITE

Construction	Tufted, Textured Loop Pile
Yarn Content	100% Undyed Wool
Tufted Yarn Weight	30 Ounces
Maximum Pile Height	6/32
Primary Backing	Hemp/Cotton
Secondary Backing	Jute
Adhesive	Natural Rubber
Stain Treatment	None
Width	12'
Flammability	Meets or Exceeds Methenamine Pill Test Requirements for Carpets and Area Rugs



Dolomite Snowfield



Dolomite Tussock



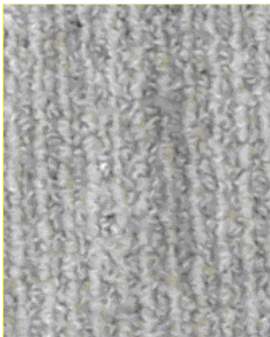
Dolomite Granite



Dolomite Ursus

PYRENEES Wheat

Construction	Tufted, Textured Loop Pile
Yarn Content	100% Undyed Wool
Tufted Yarn Weight	38 Ounces
Maximum Pile Height	8/32
Primary Backing	Hemp/Cotton
Secondary Backing	Jute
Adhesive	Natural Rubber
Stain Treatment	None
Width	12'
Flammability	Meets or Exceeds Methenamine Pill Test Requirements for Carpets and Area Rugs



Pyrenees Wheat